

**PLATE 2
LACKAWANNA COUNTY
STORMWATER MANAGEMENT PLAN
LACKAWANNA RIVER WATERSHED
EXISTING STORMWATER PLANNING INFORMATION**

LEGEND

- WATERSHED BOUNDARY
- STREAMS FOR WHICH 100 YEAR FLOODPLAIN INFORMATION EXISTS
- ▨▨▨▨▨ AREAS WHERE STORM SEWERS EXIST

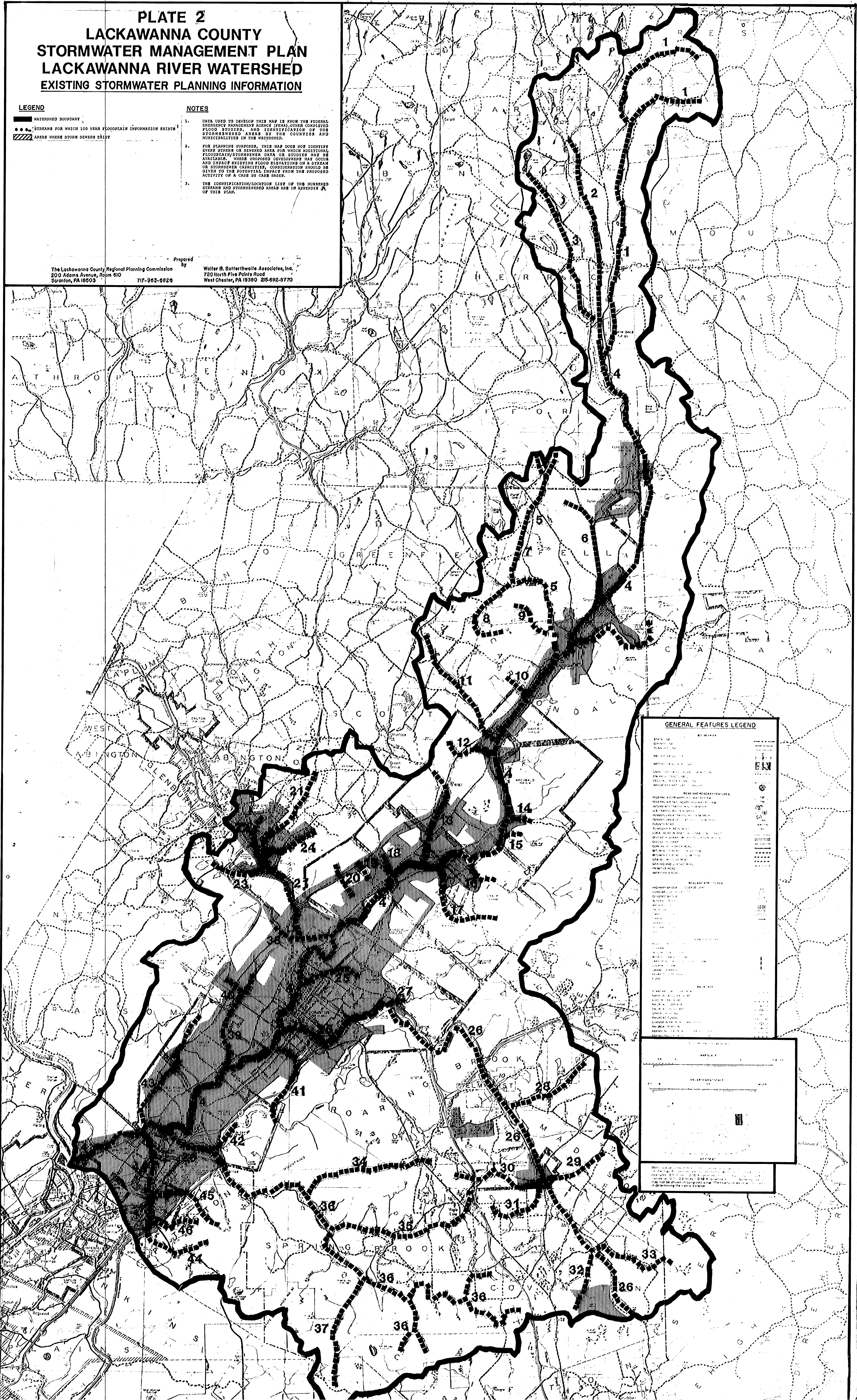
NOTES

1. DATA USED TO DEVELOP THIS MAP IS FROM THE FEDERAL EMERGENCY MANAGEMENT AGENCY (FEMA) OTHER COMPLETED FLOOD STUDIES, AND IDENTIFICATION OF THE STORMWATER AREAS BY THE COUNTIES AND MUNICIPALITIES IN THE WATERSHED.
2. FOR PLANNING PURPOSES, THIS MAP DOES NOT IDENTIFY EXISTING STREAM OR SEWERED AREA FOR WHICH ADDITIONAL FLOODPLAIN INFORMATION DATA OR STUDIES MAY BE AVAILABLE. WHEN PROPOSED DEVELOPMENT MAY OCCUR AND IMPACT EXISTING FLOOD PLANNING OF A STREAM OR STORMSEWER CAPACITY, CONSIDERATION SHOULD BE GIVEN TO THE POTENTIAL IMPACT FROM THE PROPOSED ACTIVITY ON A CASE BY CASE BASIS.
3. THE IDENTIFICATION/LOCATION LIST OF THE NUMBERED STREAMS AND STORMSEWER AREAS ARE IN APPENDIX A OF THIS PLAN.

The Lackawanna County Regional Planning Commission
200 Adams Avenue, Room 510
Scranton, PA 18503

Prepared by

Walter B. Saffert/White Associates, Inc.
720 North Fifth Points Road
West Chester, PA 19380 25-692-5770



GENERAL FEATURES LEGEND

ROADS	
State Route	—
County Route	—
Municipal Road	—
Unimproved Road	—
Right-of-Way	—
Proposed Road	—
Waterway	—
Stream	—
Canal	—
Drainage	—
Water	—
Wetland	—
Swamp	—
Marsh	—
Shrubland	—
Forest	—
Open Space	—
Urban	—
Suburban	—
Rural	—
Farmland	—
Barren	—
Water	—
Wetland	—
Swamp	—
Marsh	—
Shrubland	—
Forest	—
Open Space	—
Urban	—
Suburban	—
Rural	—
Farmland	—
Barren	—

