

**4-H
Camp Shehaqua**

For more information & camp registration packet, complete this request form and return to:

Tom McHugh, Penn State Cooperative Extension
200 Adams Avenue, LL, Scranton, PA 18503

Name _____

Address _____

City _____ State _____ Zip _____

Phone _____

E-mail _____

Camper(s) _____ Ages _____ Gender _____

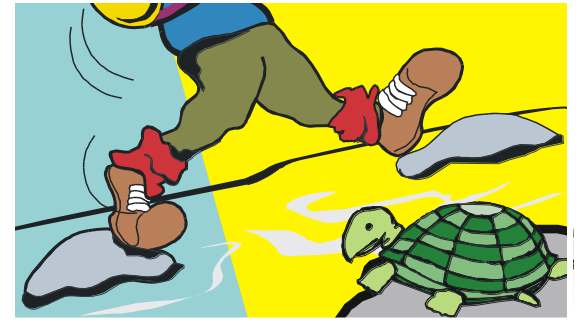


Penn State Cooperative Extension in Lackawanna County
200 Adams Avenue, LL
Scranton, PA 18503

Penn State EXTENSION

AGRICULTURE | COMMUNITY & FAMILY | ENVIRONMENT

4-H Camp Shehaqua



grow
 Life Skills

July 5th — July 9th, 2010

For children ages 8 to 18 who
 reside in Lackawanna, Luzerne,
 Monroe, Pike, and Wayne Counties



PENNSTATE



an **OUTREACH** Program of the College of Agricultural
 Sciences, and Lackawanna County Cooperative Extension

Camp Shehaqua

Summer will be here before you know it. 4-H camp offers chances to make friends, enjoy camp traditions, and learn about the outdoors.

Camp Details

Where:

Camp Shehaqua, Hickory Run State Park, White Haven, PA.

When:

Monday, July 5th, 2010

(Arrival/Registration: 9:00 A.M.—Noon)

Through

Friday, July 10th, 2010

(Pick up Time: 1:00 P.M.)

Ages:

Ages 8 to 18

Cost:

\$160.00 per camper.

(scholarships are available, contact Tom).

Registration is due by June 4th, 2010

Activities

Week long activities include:

Campfires, Archery, Swimming, Crafts, Ropes Course, Team Building exercises, and "Tribal Olympics"

More Information

Registrants will receive further information by mail, or my emailing Tom :

tam18@psu.edu



Extension Staff

Tom McHugh, Camp Director,
4-H Educator — Lackawanna & Luzerne Counties
Sherri L. Abbruzzi — 4-H Educator, Monroe Co.
Diane Boucher-Appel — 4-H Educator, Pike Co.
Kim Mikulak — 4-H Educator, Wayne Co.

Facilities

Camp Shehaqua offers youth the opportunity to experience nature in a rustic setting. Campers sleep four to a cabin with beds and mattresses but no electricity. Counselors are housed throughout the unit and counselor cabins are clearly marked. Each unit has a bath house and the camp has one shower house. In addition, Camp Shehaqua offers several recreational buildings; rec hall, arts/crafts building, nature building and a dining facility. Camp offers an accredited ropes course, offering both high and low rope challenges.

NOTE: All activities are instructed and supervised by qualified adults.

Registration Includes

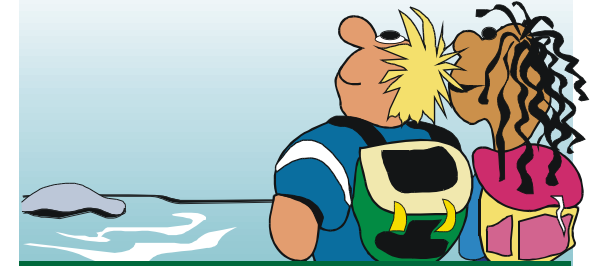
Registration fees, meals, materials, workshop supplies, and lodging.

Transportation

Parents must supply transportation to & from camp.

Hurry...Space is limited.

Register by June 4th.



Penn State College of Agricultural Sciences research, extension, and resident education programs are funded in part by Pennsylvania counties, the Commonwealth of Pennsylvania, and the U.S. Department of Agriculture.

Penn State encourages persons with disabilities to participate in its programs and activities. If you anticipate needing special accommodations or have questions about the physical access provided, please contact Sherri Abbruzzi at 570-421-6430 in advance of your participation or visit.

This publication is available in alternative media upon request.

The Pennsylvania State University is committed to the policy that all persons shall have equal access to programs, facilities, admission, and employment without regard to personal characteristics not related to ability, performance, or qualifications as determined by University policy or by state or federal authorities. It is the policy of the University to maintain an academic and work environment free of discrimination, including harassment. The Pennsylvania State University prohibits discrimination and harassment against any person because of age, ancestry, color, disability or handicap, national origin, race, religious creed, sex, sexual orientation, or veteran status. Discrimination or harassment against faculty, staff, or students will not be tolerated at The Pennsylvania State University. Direct all inquiries regarding the nondiscrimination policy to the Affirmative Action Director, The Pennsylvania State University, 328 Boucke Building, University Park, PA 16802-5901; Tel 814-865-4700/V, 814-863-1150/TTY.

PENN STATE Making Life Better®

Produced by Lackawanna County Cooperative Extension Office
U.Ed.OUT 06-0196

Copyright © 2005 The Pennsylvania State University

