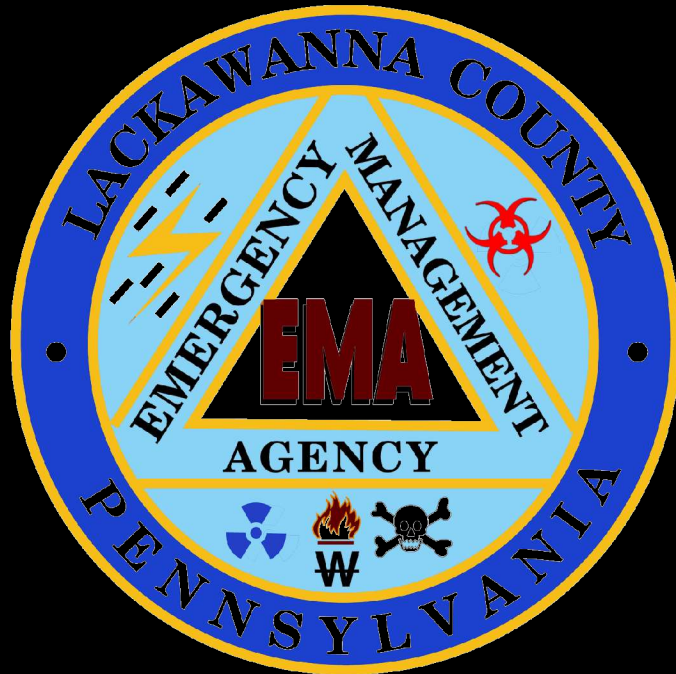




Prepare, respond and recover - quickly, accurately and effectively

Lackawanna County Center for Public Safety



Lackawanna County

Lackawanna County Commissioners

A.J. Munchak

Robert C. Cordaro

Michael J. Washo

Department of Emergency Services

Thomas K. Dubas

Richard Barbolish

Emergency Management Agency

Robert M. Flanagan

Architecture . Engineering

Electronic Security Systems Design

Security A/E Criteria

Telecom & Technology

Acoustic Engineer

Civil Engineering

Geotechnical Engineering

Site Security

Construction Manager

County Project Manager

Landscape Architecture

Highland Associates

ArchiSec, Inc.

Schrader Group Architecture, LLC

L. Robert Kimball & Assoc.

AVL Design

Oak Tree Group, LLC

GEO-Science

Beau Dietl & Associates

Bamford Construction Management

CEP Inc.

Tom J. McLane Associates



Agenda

Emergency Management &
Emergency Services

Who We Are

What We Do

The Facility

Existing Conditions

Needs Assessment

Proposed Site

Proposed Building

Construction

Schedule

Project Budget

Open Discussion

Who We Are

- Began as Lackawanna County Police Communications Network in 1973 with 7 employees & was located in the basement of 200 Adams Avenue
- Basic 9-1-1 service began in 1978
- Relocated to former Information Services offices on the 1st Floor of 200 Adams Ave in 1985 – are still there today
- Since 1985 the EMA and EMS services have dramatically increased
 - City of Scranton
 - City of Carbondale

Emergency response responsibilities have changed dramatically since 1985

Who We Are

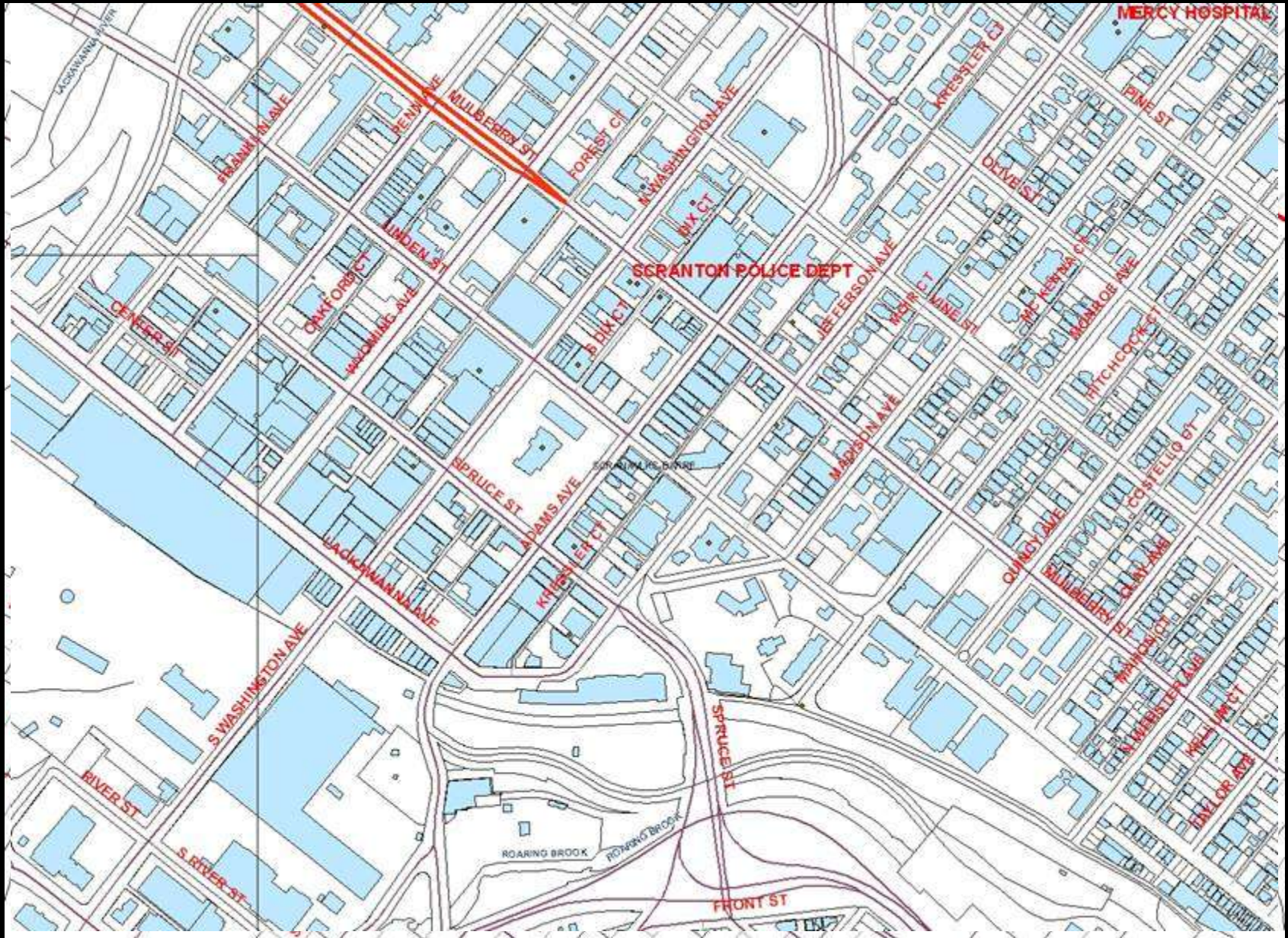


Currently dispatch for:

- **27** police departments
- **64** fire departments
- **27** ambulance services

for all municipalities in the County
with a staff of **44** employees

Lackawanna County Center for Public Safety



Emergency Management Agency (EMA)



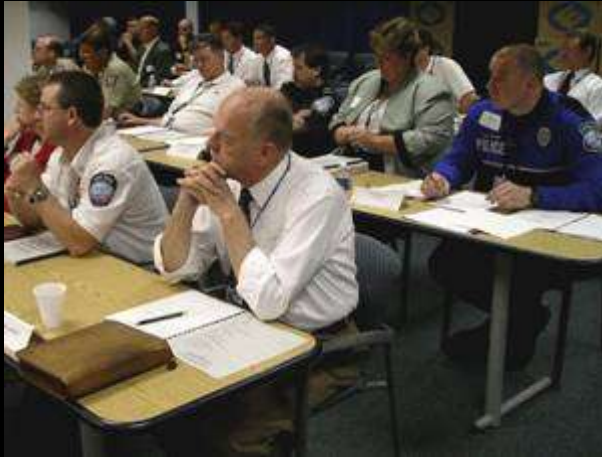
- Mitigate effects of disaster
- Prepare, respond & recover from disasters
- Respond to emergency conditions
- Organize all locally available manpower, supplies, equipment & services for disaster readiness, response & recovery

By law, must respond to:

Hazardous materials, geological emergency, certain fires, adverse weather events, nuclear/radiological, utility emergencies, transportation emergencies, civil disorder, terrorism, search and rescue, explosives, public health emergencies, agricultural/animal emergencies, aerial activity/ground spraying

Since 9/11/01, EMA has a more prominent role in responding to emergencies

Emergency Operations Center (EOC)



- Covers entire county in multi-jurisdictional situations
- Central point for information & communication
- Assess, organize and respond
- Disseminate information to public & press
- Permanent EOC required by law

Provides space for all necessary agencies during activations:

FEMA/PEMA, Children & Youth Services, Area Agency on Aging, Budget & Finance, Commissioner's Office, District Attorney, Sheriff, Roads & Bridges, PENDOTT, Center for Disease Control, State Police, area hospitals, Red Cross, Salvation Army, DEP/EPA, FBI, Secret Service, etc.

Central command point for all emergency situations

Lackawanna County Center for Public Safety

What We Do

9-1-1 Center

- Handles all 9-1-1 calls in Lackawanna County – cell and land lines
 - Fire, police, rescue & emergency medical services
- Transmits critical information to appropriate agencies
- Dispatches & monitors emergency vehicle locations
- Provides records management system for police reports
- Provides FBI National Crime Information System (NCIC) & PA Commonwealth Law Enforcement Assistance Network (CLEAN) access for each police department
- Part of 8 county Homeland Security Task Force
- Maintains contact with adjoining 9-1-1 centers & PA State Police



***Emergency dispatch 24 hrs a day, 365 days a year
With a minimum of 7 dispatchers at all times***

Lackawanna County Center for Public Safety

Services Provided

- All services are provided free of charge to all agencies
- Currently funded by Act 78 phone charge (\$1.25) on each phone line in the county.
- Additional funding from Wireless surcharges comes from PA Emergency Management Agency (PEMA).



Operational cost is minimal in taxpayer dollars

Lackawanna County Center for Public Safety

Existing Conditions



Operations



Emergency Operations Center (EOC)



Amateur Radio Room

Lackawanna County Center for Public Safety

Existing Conditions



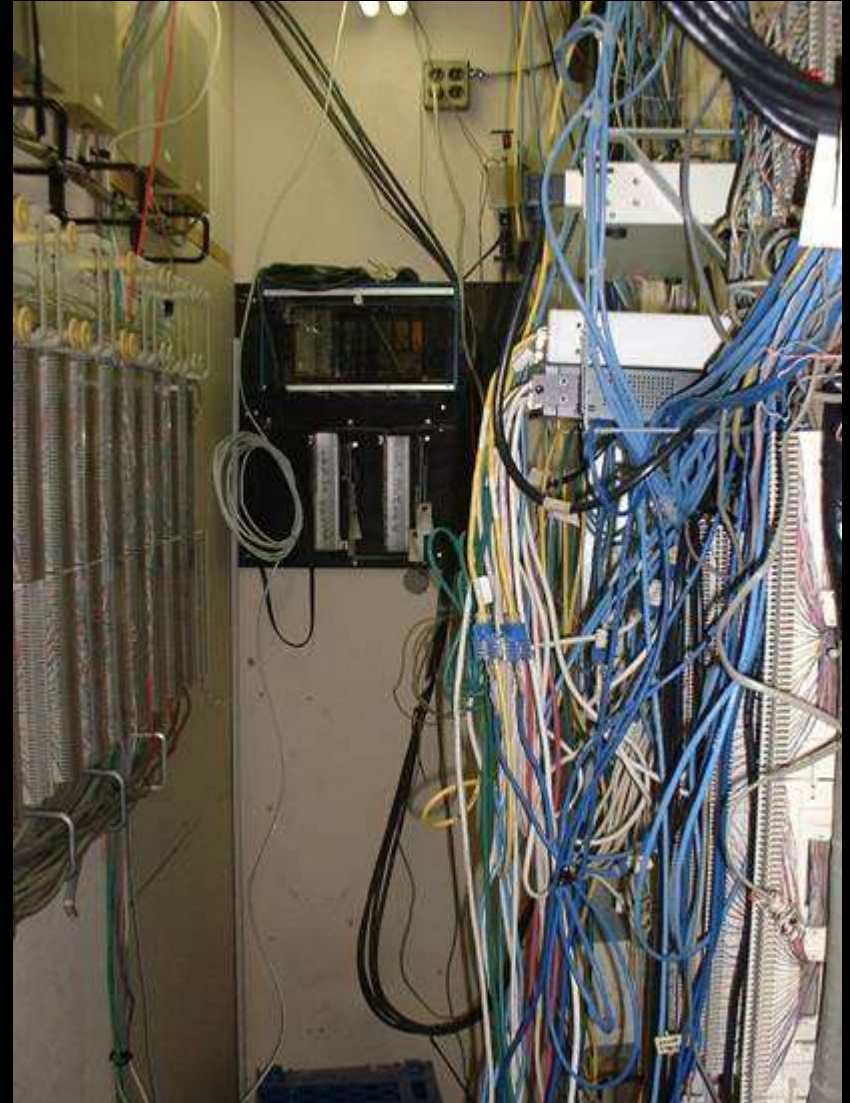
EMA Technology Suite



Training

Lackawanna County Center for Public Safety

Existing Conditions



Equipment

Lackawanna County Center for Public Safety

Existing Conditions



9-1-1 Dispatch

Existing Conditions



CPU Control Room



Employee Area

Existing Conditions

October 2004 – L. Robert Kimball completed Needs Assessment to determine:

- Conditions of existing facility
- Prospects for its continued use
- Staffing and technology needs - short (2007) and long term (2020)
- Standard for planning
- Future growth needs
- Relationship of operational coordination among agencies
- “Threats” and “vulnerabilities” of facility
- Serviceability and design-life of communications systems
- Site “threats” and “vulnerabilities”

Sound basis for designing a functional facility that meets future needs

Lackawanna County Center for Public Safety

Major Issues:

- Security
 - Location
 - Building Envelope
 - Shared Resources
- Infrastructure
 - Lack of self sufficiency & redundancy
 - Lacks provisions for continuity of government
- Technology
 - Critical equipment in remote sites
 - Location is difficult to access
 - Equipment housed in improper, insecure conditions
- Space Needs
 - Existing staff has outgrown space
 - No room for future growth
 - No accommodations for activation (sleeping, food storage, etc)
 - No space for permanent EOC
 - Parking

Existing Conditions



Recommendation

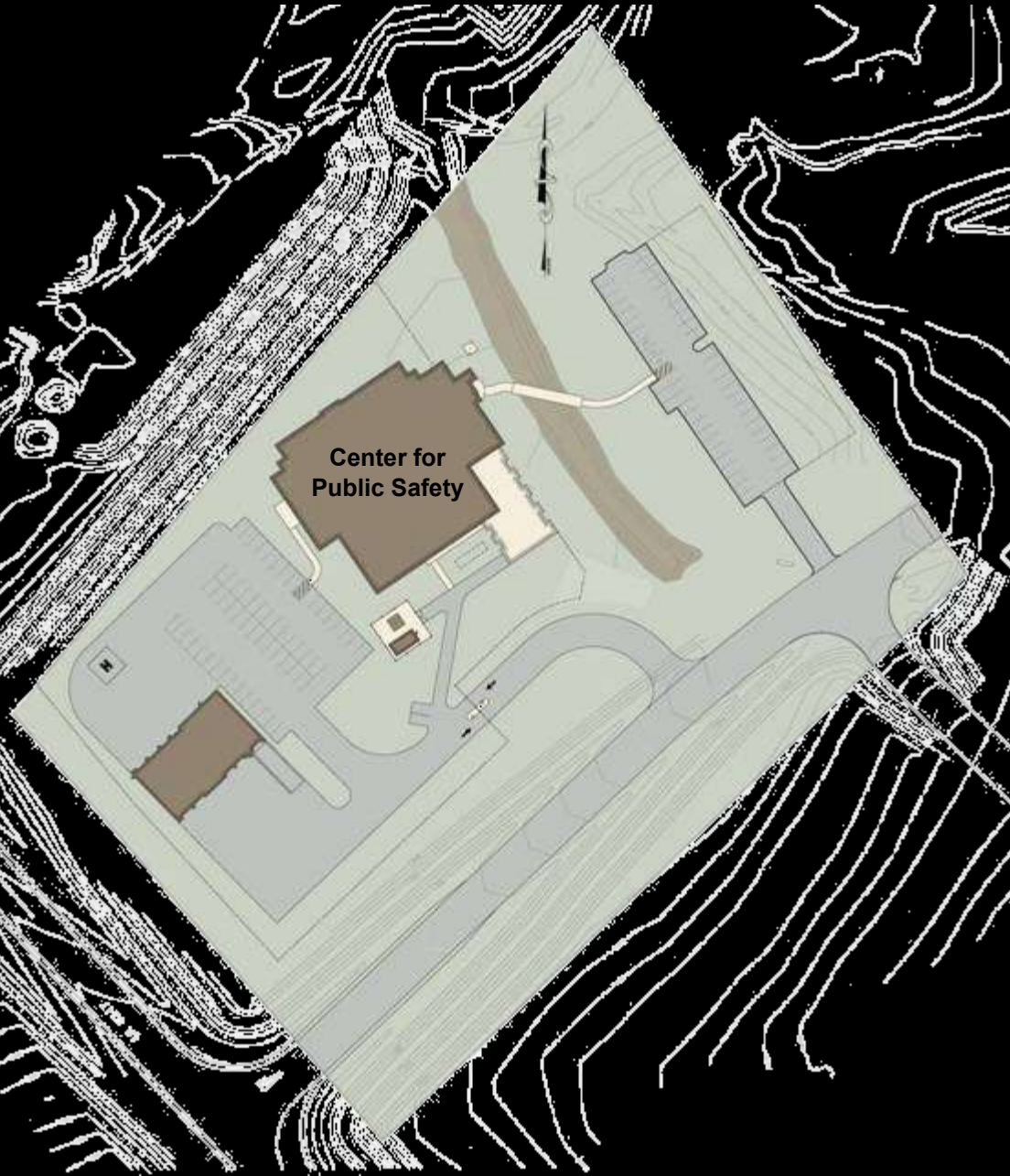
- Consolidate County Emergency Management functions to central location
 - Emergency Communication Center (9-1-1)
 - Emergency Management Agency
 - Central Training Site for all first responders
 - Central housing for county emergency vehicles & equipment
 - Storage for food and emergency supplies
- Create a permanent Emergency Operations Center, as required by law
- Separate dispatchers and call takers for safety of emergency service workers
- Implement state-of-the-art technology for police, fire and EMS response
 - GIS mapping
 - Mobile data terminals
 - Call tracking software
- Incorporate Homeland Security and Federal Guidelines



Consolidation, communication and coordination are key

Lackawanna County Center for Public Safety

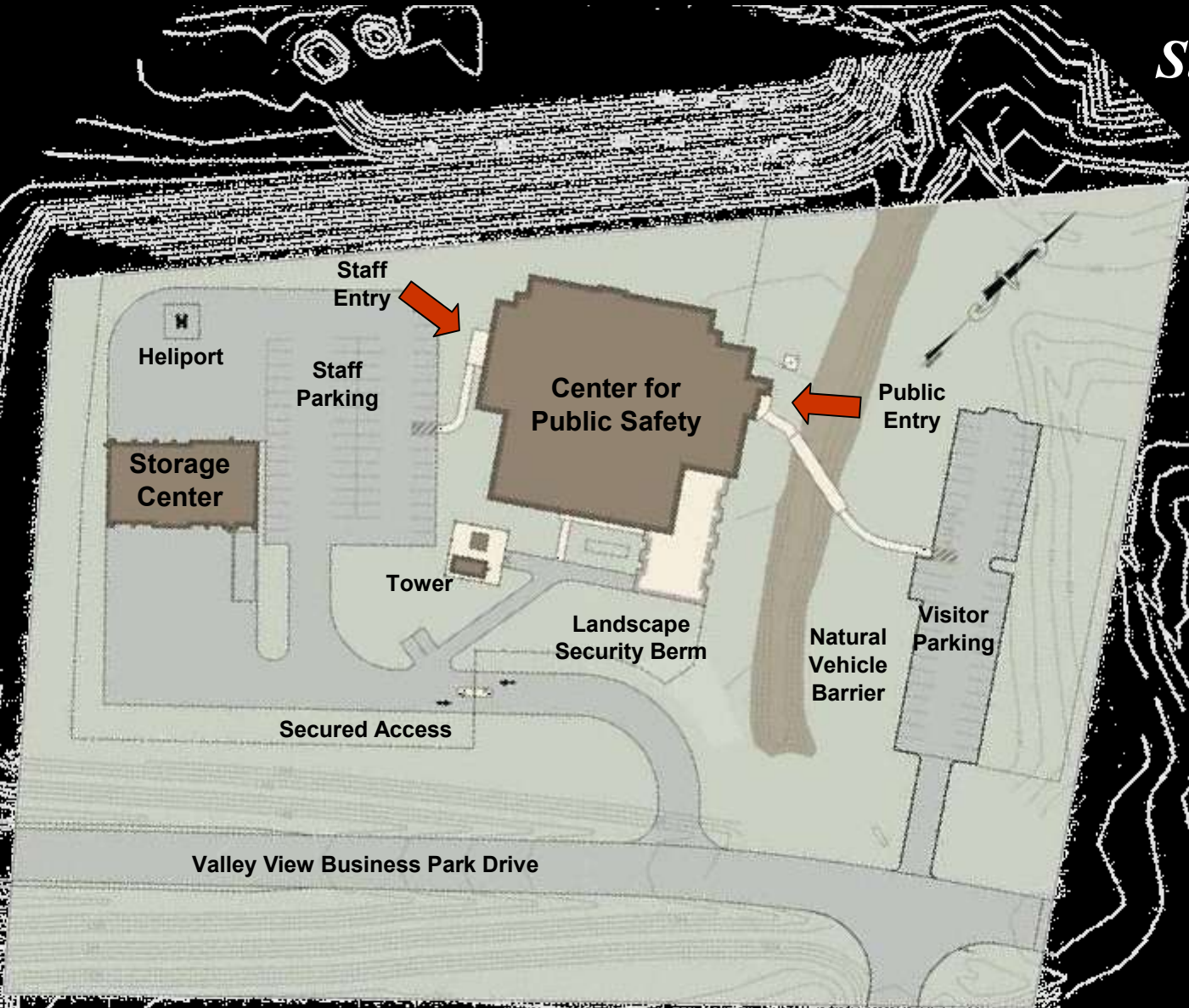
Site Plan



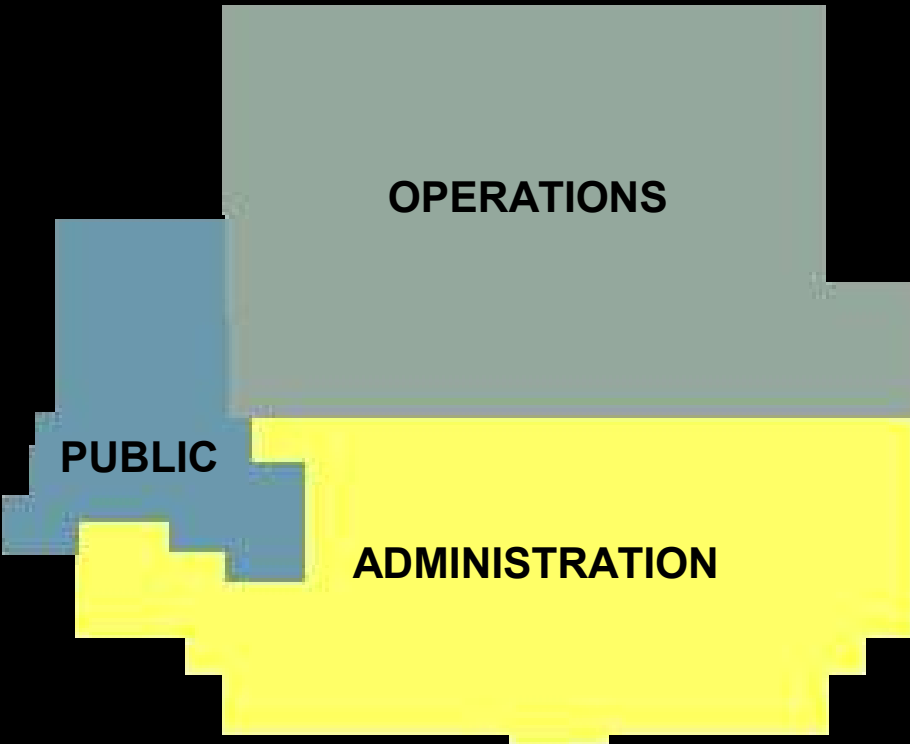
- Out of the path of security threats
- Convenient to Interstates
- Secured Access & “Threat” Protection
- Proper Parking
- Ideal for radio transmission
- Emergency Heliport
- Mobile Incident Command Unit storage
- Food supplies & equipment storage
- Access for emergency personnel
24 hours, 365 days a year

Lackawanna County Center for Public Safety

Site Plan



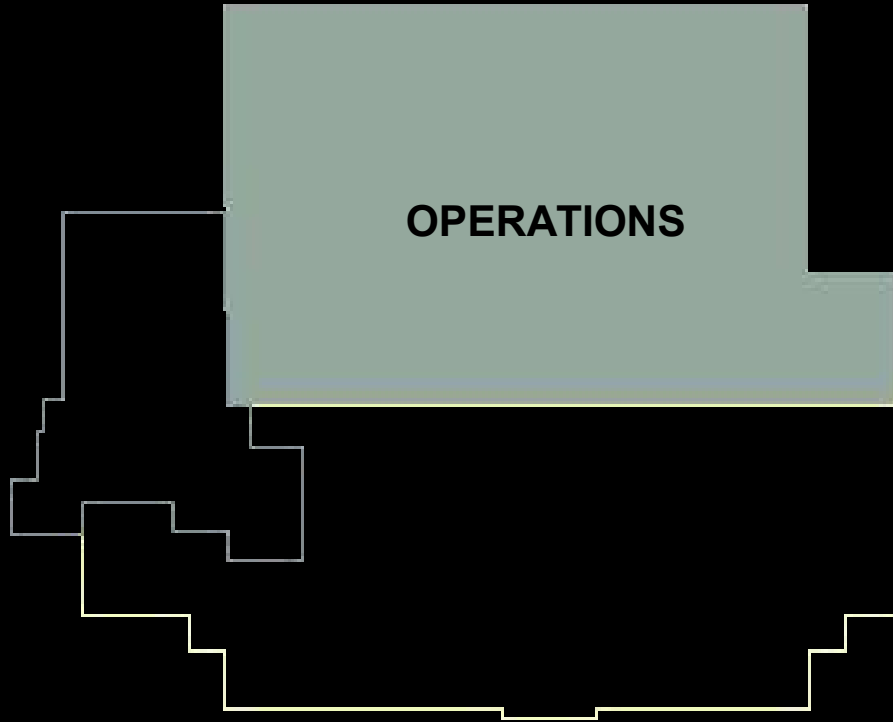
Building Plan



- Incorporates Homeland Security Guidelines
- Federal Guidelines
- Security for equipment & staff
- Self-reliant facility in case of activation
- Full redundancy for all systems
- Air filtration & monitoring for harmful airborne particulates
- Flexible Spaces for continuity of government
- Products & Materials for maximum durability
- Systems & Materials supporting Mission Critical applications

EMA & DES Operations

Operations includes:



- 9-1-1 Center
- Permanent Emergency Operations Center
- Rumor Control
- Situation Room
- RACES Room
- CAD Telephone Room
- Electrical & Mechanical Spaces

- Hardened Construction
- Full redundancy of all systems
 - Mechanical, electrical, gas, water
- Latest technology for fire, EMS and police
 - GIS mapping, mobile data terminals, call tracking software, etc.
- Ability to monitor weather & road conditions
- Additional dispatch (up to 18)
- Maximized Daylighting
- Ergonomic Design

Designed for emergency dispatch and response 24 hours / 365 days a year

Lackawanna County Center for Public Safety

9-1-1 Center



Current 9-1-1 Center

- No acoustical privacy
- Not designed for recent technology
- Lacks environmental controls
- Lacks ergonomic features for 24/7
- Not oriented to information media
- Isolated from support



New 9-1-1 Center

- Implements acoustical design
- Incorporates latest technology
- Provides environmental controls
- Superior ergonomic design
- Clear view to information media
- Immediate access to support

EMA & DES Administration

Administration includes:

- Emergency Services Offices
- Emergency Management Offices
- First Responder Training Room
- Emergency Management Equipment
- Conference Space
- Information Technology
- GIS Mapping
- Quality Assurance
- Activation Support Space
 - Bulk food storage, sleep rooms, locker rooms, linen supply, etc.
- Copy Center & Supply Center
- Controlled Access & Security

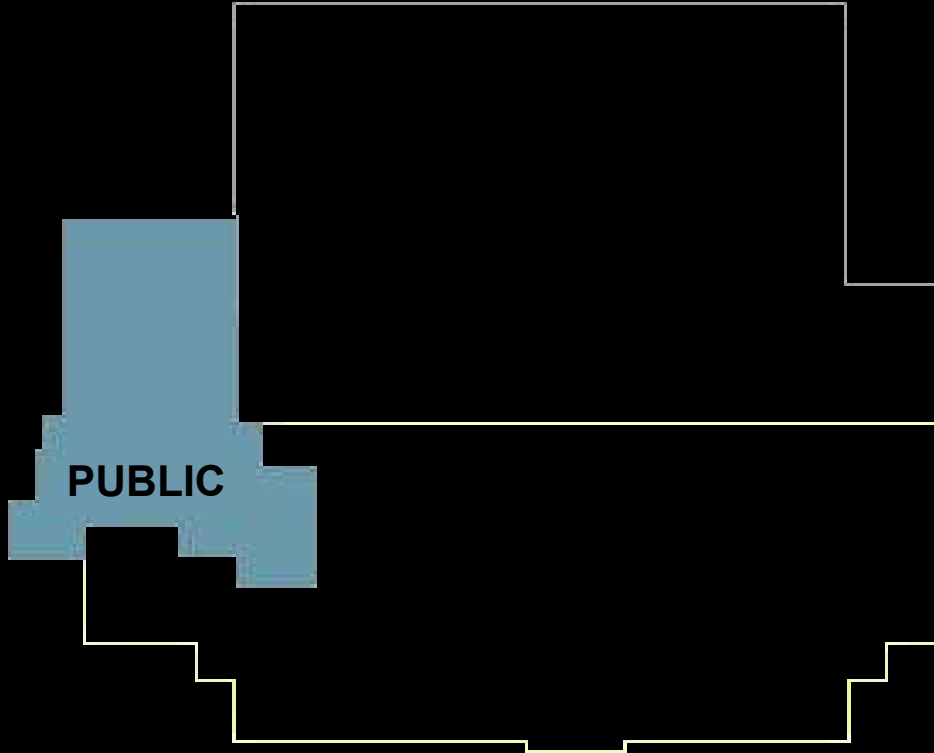


ADMINISTRATION

Provides flexible office space for continuity of government

Public Space

- Provides a large Public Meeting & Training Room
- Allows for tours to view the 9-1-1 Center Operations
- Accommodates Media & Public during activation
- Proper service for Media technology
- Flexible Design for many uses



Incorporates community use with impacting day-to-day operations

Lackawanna County Center for Public Safety



Totally self reliant facility designed for continuity of emergency services

Introduction

- In business in Lackawanna County since 1970
- Extensive experience in specialized governmental buildings with intricate mechanical, electrical, and security systems
- Special security requirements projects
 - High security unit Muncy prison, Muncy PA
 - Interior renovations Farview prison, Waymart PA
 - L4 unit Dallas Prison, Dallas PA
 - Federal courtroom renovations, Scranton PA
 - FBI offices, Williamsport PA
- Specific electrical & communication projects
 - ASD computer center Tobyhanna Army Depot, Tobyhanna PA
 - Social security data operations, Wilkes-Barre, PA
 - Bloomsburg University Library, Bloomsburg PA
 - Renovations at both Mercy and Moses Taylor Hospitals, Scranton PA

Role of the Construction Manager

Review design documents and prepare bid packages

Bid work packages to area contractors

Conduct bid analysis and award contracts

Ensure quality control

Monitor and enforce project safety

Supervise all aspects of construction to maintain project schedule and budget

Budget Control

Construction budget based on design drawings

Review drawings for suggested savings and efficiencies

Conduct value engineering as required

Maintain budget throughout construction.

Construction Schedule

<i>Activity</i>	<i>Start Date</i>	<i>Finish Date</i>
Documents 100% Complete	February 2005	September 2005
Prepare for Bid	Late September 2005	October 2005
Bidding	Early November 2005	Late November 2005
Bid Evaluation & Award	Mid November 2005	December 2005
Submittals & Construction	November 2005	April 2007

Project Budget

Project Cost*	\$18,000,000
Additional Funding**	\$ 3,000,000
Total Cost to Taxpayers	\$15,000,000

* Project Cost includes land acquisition, permits, professional fees, FF&E, technology, sitework & security.
Construction Cost is \$11,700,000

**Technology to be paid for by outside sources.

Lackawanna County Center for Public Safety

Open Discussion



Totally self reliant facility designed for continuity of emergency services